

ARB AIR LOCKER *Air Operated Locking Differentials*

RD193 Toyota 8" RR, 12 bolt RG, shim adjusted

Specs:

Axle Spline	30 tooth, Ø33mm [1.31"]
Ratio Supported	All
Ring Gear ID	125.98mm [4.96"]
Ring Gear OD	207mm [8.15"]
Ring Gear Bolts	12 bolts on Ø160.0mm [6.30"]
Ring Gear Torque	95Nm [70 ft-lb]
Backlash	0.15-0.25mm [0.006-0.010"]
Bearing Cap Torque	95Nm [70 ft-lb]

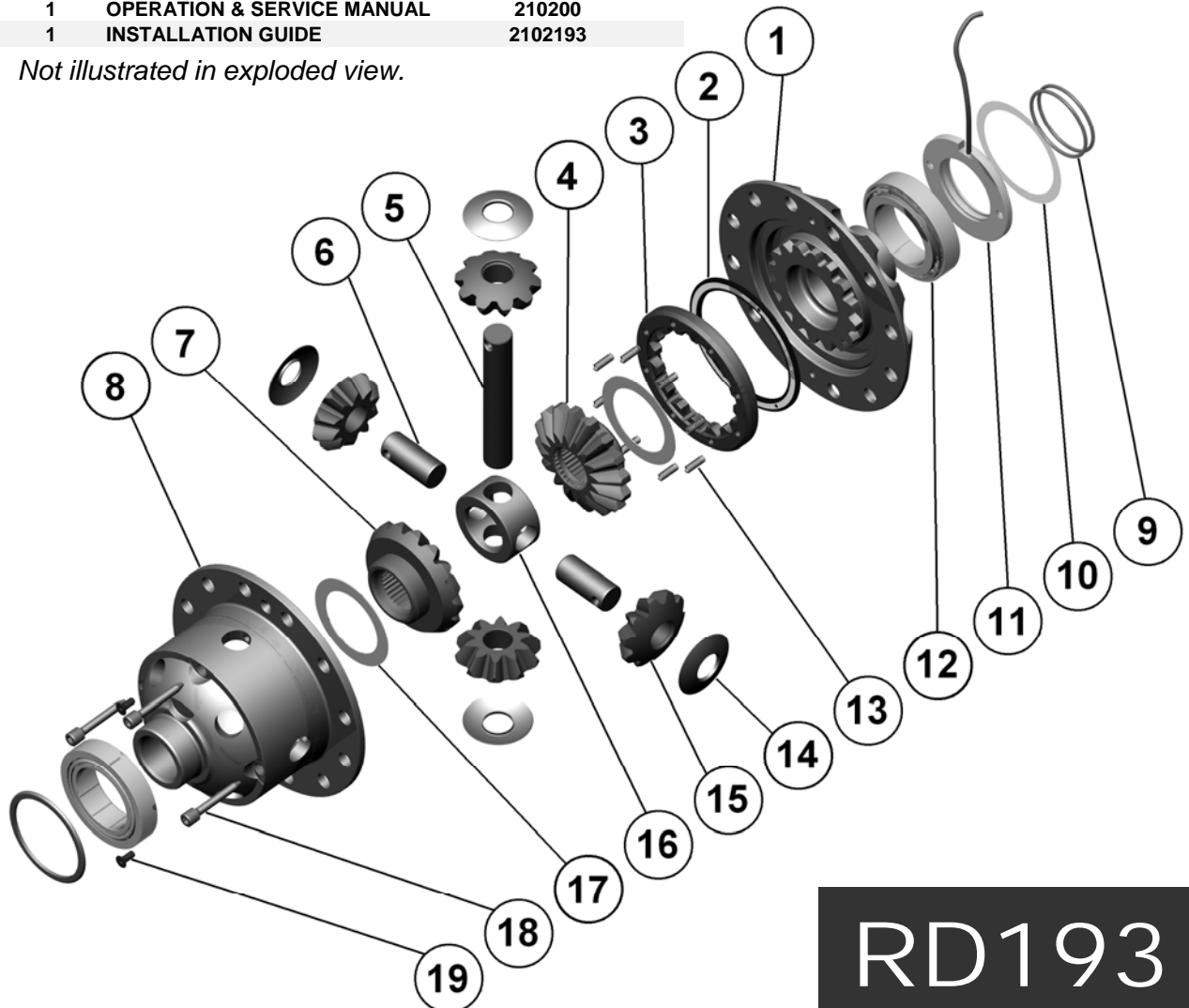
ITEM #	QTY	DESCRIPTION	PART #	NOTES
01	1	FLANGE CAP ASSEMBLY	027328	
02	1	BONDED SEAL	160702	
03	1	CLUTCH GEAR	050806	
04	1	SPLINED SIDE GEAR	728H111**	
05	1	LONG CROSS SHAFT	060204	
06	2	SHORT CROSS SHAFT	060403	
07	1	SIDE GEAR	728H111**	
08	1	DIFFERENTIAL CASE	013028	
09	2	SEAL HOUSING O-RING	160207	
10	1	SHIM KIT	SHK004	
11	1	SEAL HOUSING ASSEMBLY	081814	
12	1	TAPERED ROLLER BEARING	NOT SUPPLIED	
13	8	RETURN SPRING	150113	
14	4	PINION THRUST WASHER	151110	
15	4	PINION GEAR	728H111**	
16	1	SPIDER BLOCK	070201	
17	2	SIDE GEAR THRUST WASHER	151010	
18	3	CROSS SHAFT RETAINING PIN	120601	
19	2	COUNTERSUNK SCREWS	200213	
*	1	BULKHEAD FITTING KIT (O-RING TYPE)	170111	
*	1	PUSH-IN FITTING (5mm to 1/8" BSPP)	170201	
*	1	NIPPLE (1/8" to 1/8" BSPT)	170501	
*	1	AIR LINE (5mm DIA X 6m LONG)	170301	
*	1	SOLENOID VALVE (12V)	180103	
*	1	SWITCH	180209	
*	1	SWITCH COVER (REAR)	180211	
*	10	CABLE TIE	180301	
*	1	WARNING LABEL	210101	
*	1	BUMPER STICKER	210102	
*	1	OPERATION & SERVICE MANUAL	210200	
*	1	INSTALLATION GUIDE	2102193	

Notes:

- 1 For replacement O-rings use only BS136 Viton 75.
- 2 Available only as complete 6 gear set # 728H111

For 8" Toyota adjuster nut pre-loaded rear refer to RD132 ([Section 2.132](#)).

* Not illustrated in exploded view.



RD193

