



FITTING INSTRUCTIONS

Part Number: **2848030 (LH ASSEMBLY) & 2848040 (RH ASSEMBLY)**

Product **ARB RECOVERY POINT**

Description:

Suited to **Isuzu DMAX 08/2020 ON**
vehicle/s: **Mazda BT50 08/2020 ON**

WARNING

NOTE THE FOLLOWING:

- ◆ This product must be installed exactly as per these instructions using only the hardware supplied.
- ◆ In the event of damage to any recovery point component, contact your nearest authorised ARB stockist. Repairs or modifications must not be attempted.
- ◆ Do not use this product for any vehicle make or model, other than those specified by ARB.
- ◆ Do not remove labels from this recovery point.
- ◆ This product or its fixing must not be modified in any way.
- ◆ The installation of this product may require the use of specialized tools and/or techniques
- ◆ It is recommended that this product is only installed by trained personnel
- ◆ These instructions are correct as at the publication date. ARB Corporation Ltd. cannot be held responsible for the impact of any changes subsequently made by the vehicle manufacturer
- ◆ During installation, it is the duty of the installer to check correct operation/clearances of all components
- ◆ Work safely at all times
- ◆ Unless otherwise instructed, tighten fasteners to specified torque

ARB 4x4 ACCESSORIES

Corporate Head Office

42-44 Garden St
Kilsyth, Victoria
AUSTRALIA 3137

Tel: +61 (3) 9761 6622
Fax: +61 (3) 9761 6807

Australian enquiries
North & South American enquiries
Other international enquiries

sales@arb.com.au
sales@arb.com.au
exports@arb.com.au

www.arb.com.au

GENERAL CARE AND MAINTENANCE

By choosing an ARB Recovery Point, you have bought a product that is one of the most sought after 4WD products in the world. Your recovery point is a properly engineered, reliable, quality accessory that represents excellent value. To keep your recovery point in original condition it is important to care and maintain it following these recommendations:



As part of any Pre-Trip Preparation, or on an annual basis, it is recommended that a thorough visual inspection of the recovery point is carried out, making sure that all bolts and other components are torqued to the correct specification. Replace any components as necessary. This service can be performed by your local authorised ARB Stockist.

FITTING REQUIREMENTS

REQUIRED TOOLS FOR FITMENT OF PRODUCT:

BASIC TOOL KIT	TORQUE WRENCH (9-77Nm)
PERMANENT MARKER	JIG SAW OR OSCILATING MULTITool WITH BLADE SUITABLE FOR PLASTIC

HAVE AVAILABLE THESE SAFETY ITEMS WHEN FITTING PRODUCT:

Protective eyewear		Hearing protection	
--------------------	---	--------------------	---

NOTE: 'WARNING' notes in the fitting procedure relate to OHS situations, where to avoid a potentially hazardous situation it is suggested that protective safety gear be worn or a safe work procedure be employed. If these notes and warnings are not heeded, injury may result.

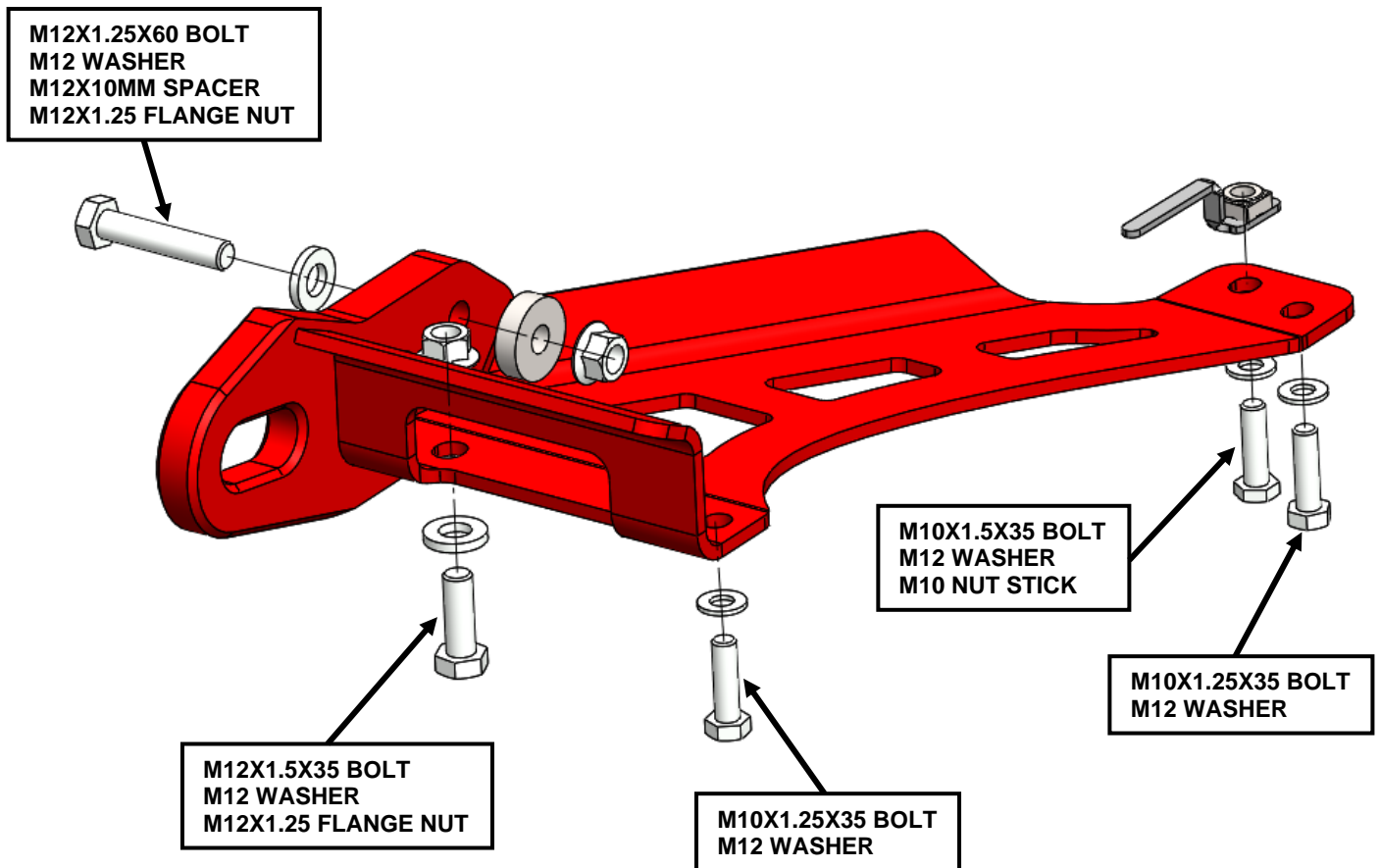
FASTENER TORQUE SETTINGS:

SIZE	Torque Nm	Torque lbft
M6	9Nm	7lbft
M8	22Nm	16lbft
M10	44Nm	32lbft
M12	77Nm	57lbft

PARTS LISTING

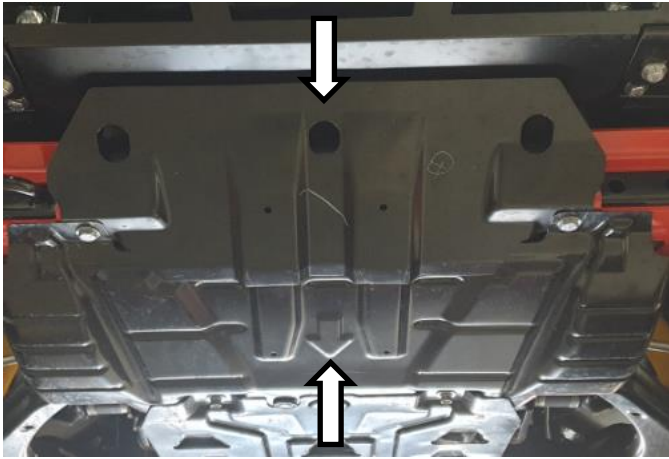
APPLICATION.	PART NO.	QTY	DESCRIPTION
RECOVERY POINT FITMENT	2125484	1	RECOVERY POINT WARNING LABEL
	3194376	1	WASHER SPACER DIA12MMX35MM 10MM PLATE
	4584312	4	WASHER FLAT M10x20x2 TZP
	4584363	2	WASHER FLAT M12x26x4 HV300 TZP480
	4584394	1	WASHER FLAT M10x24x6 ZP
	4655037	1	NUT STICK M10
	6151088	3	BOLT HXHD M10x1.25x35 PC8.8 ZP
	6151095	1	BOLT HXHD M12x1.25x35 PC8.8 ZP
	6151204	1	BOLT HXHD M10x1.5x35 PC8.8 ZP
	6151480	2	NUT FLANGE M12x1.25 PC8.8 TZP480
	6151679	1	BOLT HXHD M12x1.25x60 PC10.9 ZP

NOTE: LHS and RHS recovery point assemblies are symmetric. Installation procedure for LH recovery point (Part No. 2848010) is an exact mirror of RH recovery point (2848020) unless otherwise specified. All images are of RH installation unless otherwise specified.



RH Recovery point shown

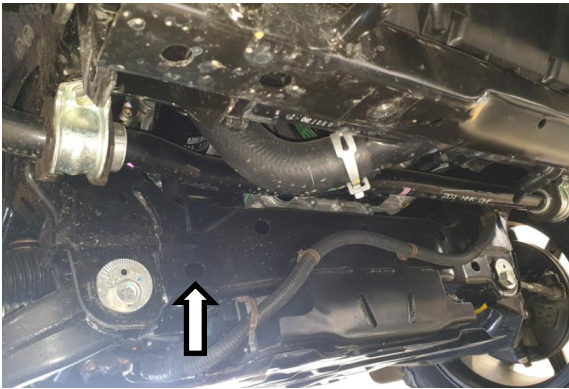
FITTING PROCEDURE – WITH ARB BULL BAR



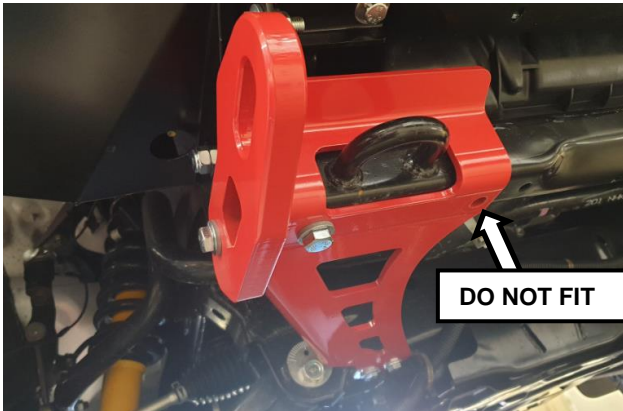
1. Remove the 2x front OE under panels (or ARB UVP panels if fitted).



2. Bend nut stick as shown.

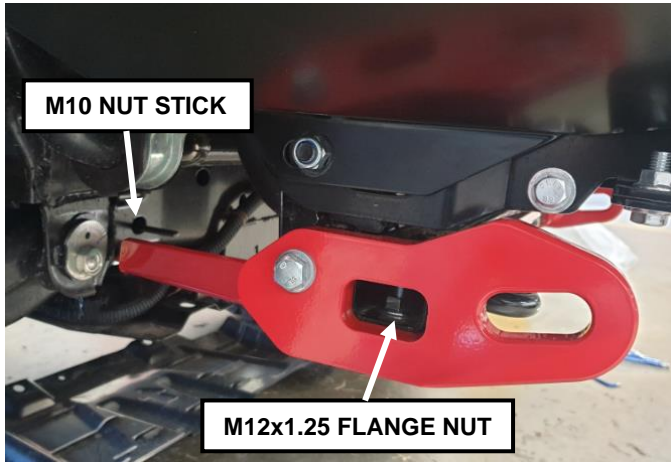


3. Nut stick needs to be fed into this chassis hole as shown.

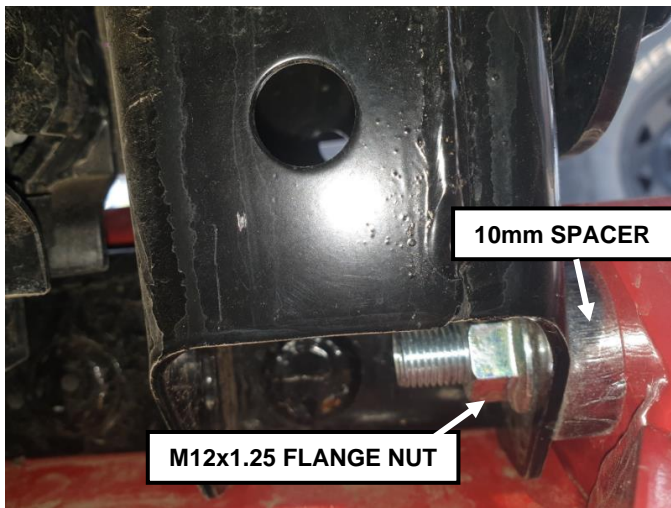


4. Loosely fit the recovery point using fasteners shown on page 3. Leave the M10x1.25x35 bolt out.

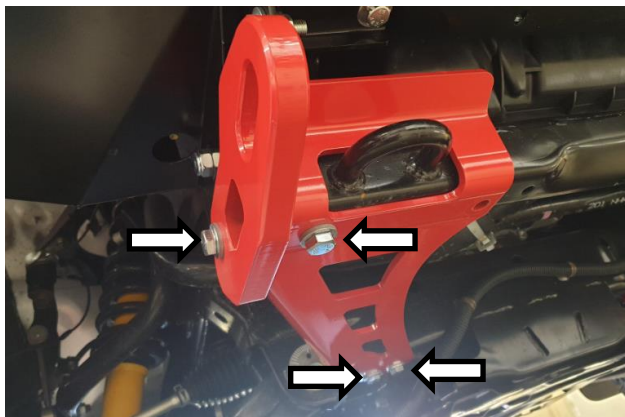
FITTING PROCEDURE – WITH ARB BULL BAR





5. Check nut stick is in position shown.
6. M12x1.25 flange nut to sit inside chassis.

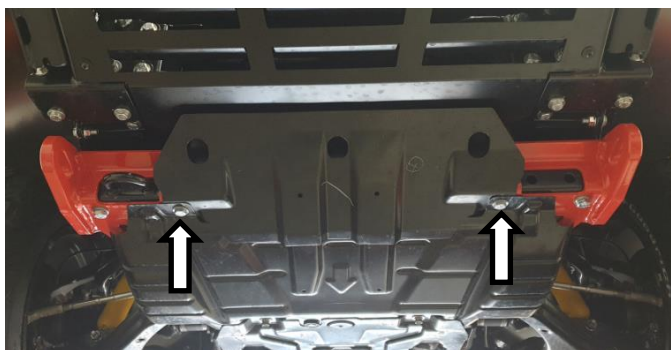


7. 10mm spacer to sit between recovery point and chassis.
8. M12x1.25mm flange nut to sit inside chassis as shown.




9. Tighten 4x fasteners to specified torque

 M12 – 77Nm
 M10 – 44Nm



10. Refit OE stone shields as shown. Discard the 2x OE M10 bolts and replace with the M10x1.25x35 bolts supplied in the fitting kit.
11. If only 1x recovery point is being fitted use a 6mm spacer between the chassis and stone shields (supplied in the fitting kit).

 M10 – 44Nm

FITTING PROCEDURE – WITH ARB BULL BAR

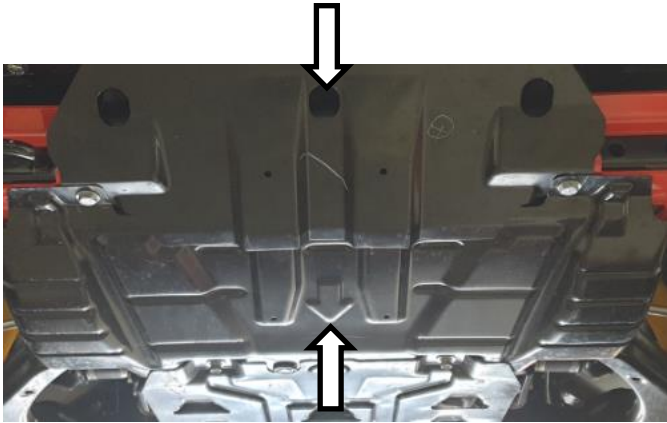


12. Fit the supplied warning label in a prominent position close to the recovery point.

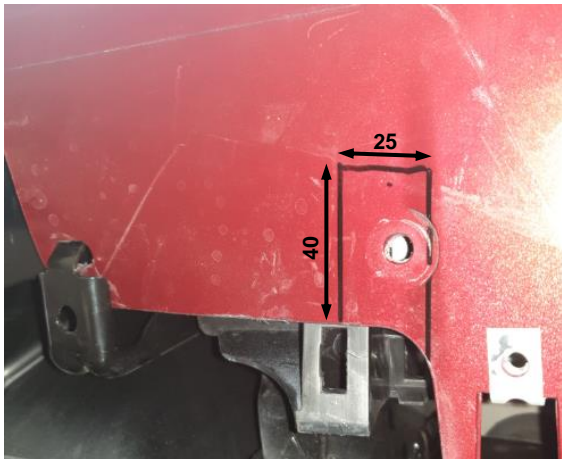
FITTING PROCEDURE – WITH OE BUMPER BAR



13. Remove the 2x plastic panels on each side by removing the screws and plastic scrivenets and discard.



14. Remove the 2x front OE under panels (or ARB UVP panels if fitted).



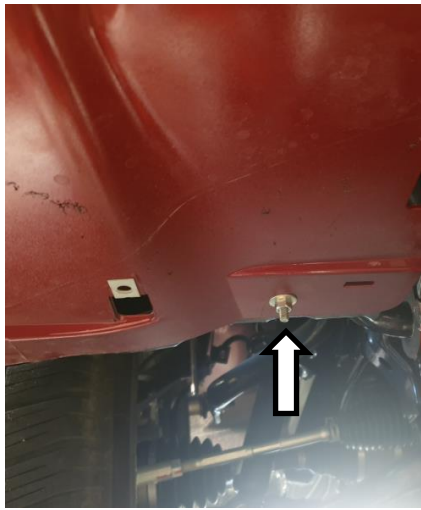
15. Mark the area shown on both sides (or one side if only one recovery point is being fitted).



16. Carefully cut bumper along marked lines using an oscillating multitool or jig saw.
17. Deburr any rough or sharp edges.



Warning: Cutting operations can result in flying metal debris, safety glasses should be worn.



18. Refit the M6 nut underneath the bumper on each side as shown.



19. Proceed to install recovery points as per steps 2-12.

Fitted Product: 2020 BT50 with OE Bumper



Fitted Product: 2020 DMAX with Summit Bull Bar

