



FITTING INSTRUCTIONS

Part Number: **5446110**
Product **Under Vehicle protection**
Description:
Suited to **Mitsubishi Triton MQ**
vehicle/s:

WARNING

REGARDING VEHICLES EQUIPPED WITH SRS AIRBAG:

When installed in accordance with these instructions, the vehicle protection panels do not affect operation of the SRS airbag.

ALSO, NOTE THE FOLLOWING:

- ◆ This product must be installed exactly as per these instructions using only the hardware supplied.
- ◆ Do not use this product for any vehicle make or model, other than those specified by ARB.
- ◆ Do not remove labels (if any) from this product.
- ◆ This product or its fixing must not be modified in any way.
- ◆ The installation of this product may require the use of specialized tools and/or techniques
- ◆ These instructions are correct as at the publication date. ARB Corporation Ltd. cannot be held responsible for the impact of any changes subsequently made by the vehicle manufacturer
- ◆ During installation, it is the duty of the installer to check correct operation/clearances of all components
- ◆ Work safely at all times
- ◆ Unless otherwise instructed, tighten fasteners to specified torque

ARB 4x4 ACCESSORIES

Corporate Head Office

42-44 Garden St
Kilsyth, Victoria
AUSTRALIA 3137

Tel: +61 (3) 9761 6622
Fax: +61 (3) 9761 6807

Australian enquiries
North & South American enquiries
Other international enquiries

sales@arb.com.au
sales@arbusa.com
exports@arb.com.au

www.arb.com.au

IMPORTANT INFORMATION. GENERAL CARE AND MAINTENANCE

By choosing ARB vehicle protection, you have bought a product that is one of the most sought after 4WD products in the world. Your under vehicle protection panels are a properly engineered, reliable, quality accessory that represents excellent value.



- While these panels have been engineered for strength and functionality care and good judgment should be taken when traversing difficult off-road conditions to minimise damage to panels and vehicle.
- During servicing when panels are removed ensure fasteners are re-fitted to the correct torque values.
- Inspect panels visually on a regular basis. Dirt and foreign matter should be washed out to minimise build-up around hot components. **BE VERY CAREFUL** when removing foreign matter with hands while vehicle is hot or running. Replace any components as necessary. This service can be performed by your local authorized ARB Stockist.

FITTING REQUIREMENTS

REQUIRED TOOLS FOR FITMENT OF PRODUCT:

BASIC TOOL KIT	TORQUE WRENCH (9Nm – 77Nm)
----------------	----------------------------

HAVE AVAILABLE THESE SAFETY ITEMS WHEN FITTING PRODUCT:

Protective eyewear 	Hearing protection 
--------------------------------------------------------------------------------------------------------	----------------------------------------------------------------------------------------------------------

NOTE: 'WARNING' notes in the fitting procedure relate to OHS situations, where to avoid a potentially hazardous situation it is suggested that protective safety gear be worn or a safe work procedure be employed. If these notes and warnings are not heeded, injury may result.

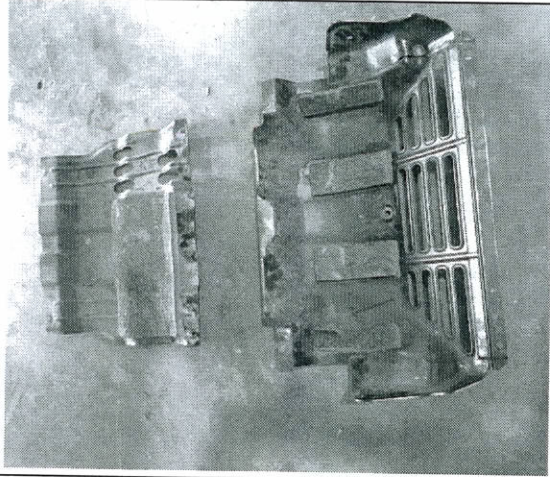
FASTENER TORQUE SETTINGS:

SIZE	Torque Nm	Torque lbft
M6	9Nm	7lbft
M8	22Nm	16lbft
M10	44Nm	32lbft
M12	77Nm	57lbft

PARTS LISTING

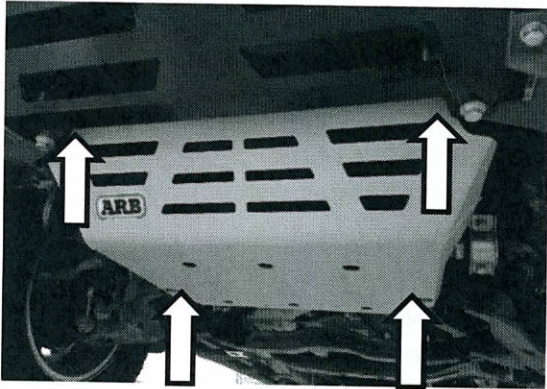
APPLICATION.	PART NO.	QTY	DESCRIPTION
Front Panel fitment	6523112	1	FRONT PANEL ASSY TRITON MQ
	6151022	7	BOLT M8x1.25x25
	4581046	7	WASHER SPRING M8
	4581044	7	WASHER FLAT M8
Diff Panel fitment	6523113	1	DIFF PANEL ASSY TRITON MQ
	6151022	7	BOLT M8x1.25x25
	4581046	7	WASHER SPRING M8
	4581044	7	WASHER FLAT M8
	6151132	3	NUT FLANGE M8
Transmission Panel fitment	6523114	1	TRANSM PANEL ASSY TRITON MQ
	6151022	3	BOLT M8x1.25x25
	4581046	3	WASHER SPRING M8
	4581044	3	WASHER FLAT M8
	6151132	3	NUT FLANGE M8
	6151355	2	BOLT M12x1.75x30
	4581049	2	WASHER FLAT M12
	4581050	2	WASHER SPRING M12
4654222	2	NUT PLATE M12x1.75	
Transfer Case Panel fitment	6523115	1	TRANSF PANEL ASSY TRITON MQ
	6151022	4	BOLT M8x1.25x25
	4581046	4	WASHER SPRING M8
	4581044	4	WASHER FLAT M8

FITTING PROCEDURE – Fitment with OEM bumper

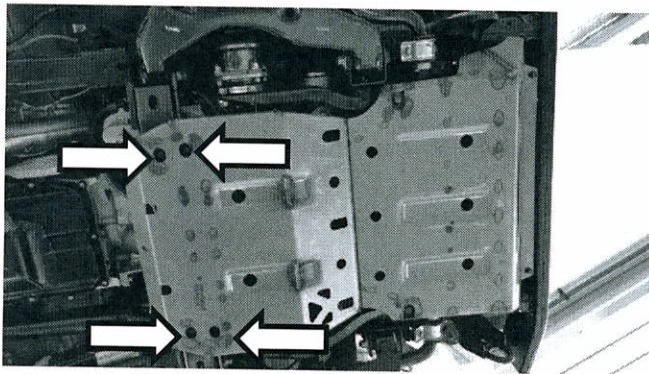


1. Remove OEM panels (front splash panel & diff panel) from vehicle – 6 bolts.

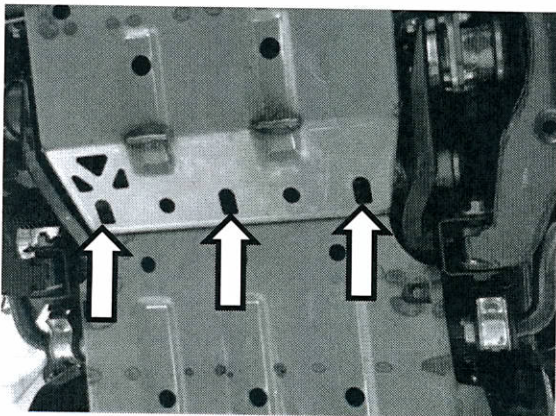
Dispose of all components removed.



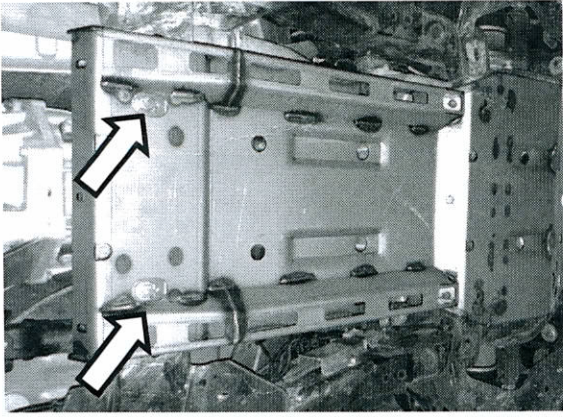
2. Loosely fit front panel to chassis using 4x M8x1.25x25 bolts, spring washers and flat washers.



3. Loosely fit diff panel to chassis using 4x M8x1.25x25 bolts, spring washers and flat washers.

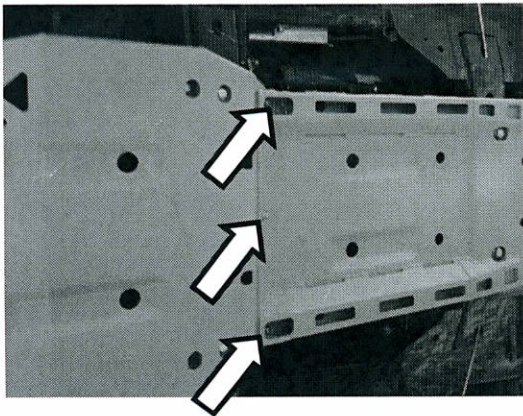
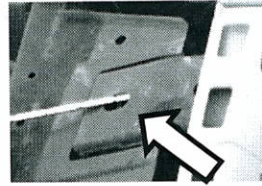


4. Loosely fasten 3x M8x1.25x25 bolts, spring washers and flat washers to join front panel to diff panel.

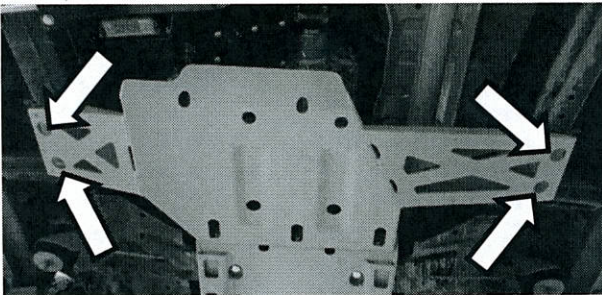


5. Loosely fit transmission panel to chassis using 2x M12x1.75x30 bolts, 2x M12 spring washers, 2x flat washers and 2x M12n nut plates.

Note: Feed nut plates through openings in transmission cross member as shown.

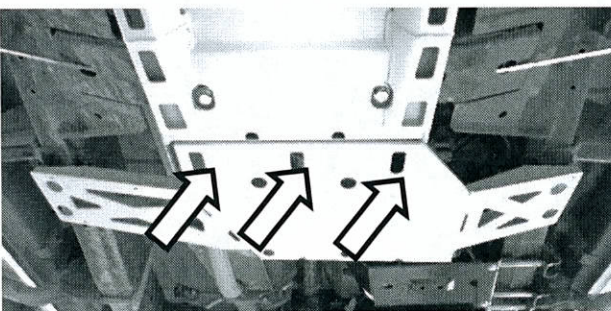


6. Loosely fasten transmission panel to diff panel using 3x M8x1.25x25 bolts, spring washers, flat washers and flange nuts.

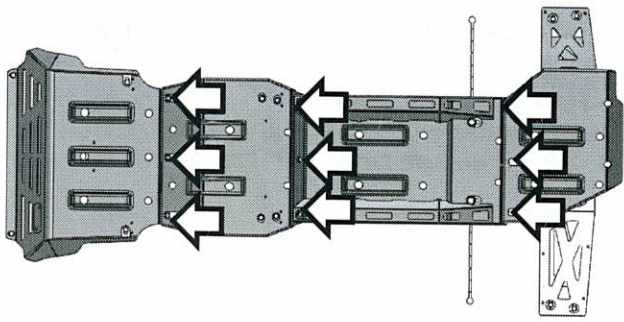


7. Loosely fit transfer case panel to chassis using 4x M8x1.25x25 bolts, spring washers and flat washers as shown.


Note: If side ARB side rails are fitted, replace original fasteners used to mount side rail with ones mentioned.

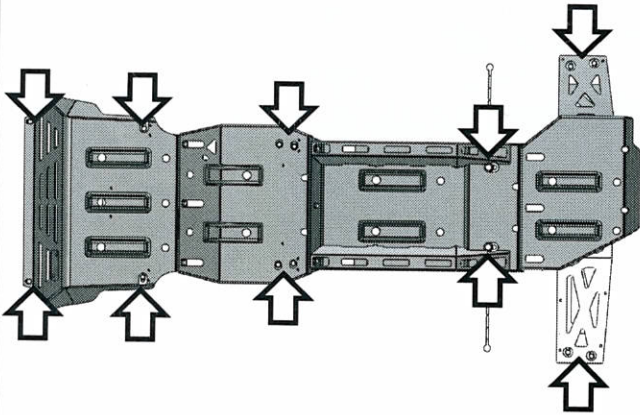


8. Loosely fasten transfer case panel to transmission panel using 3x M8x1.25x25 bolts, spring washers, flat washers and flange nuts.




9. Tighten all fasteners relating to joining panels.

 M8 – 22Nm



10. Tighten all fasteners joining panels to chassis.

 M8 – 22Nm

 M12 – 77Nm

FITTED PRODUCT

